

Phase one: Pilot

Pilot projects and schemes already underway amended to incorporate climate resilience measures.



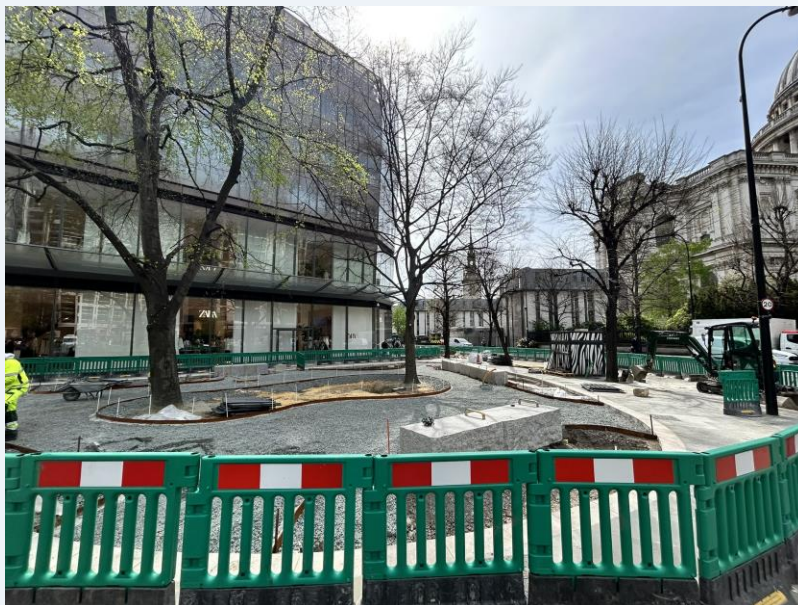
'Xeriscape' (drought resistant) planting City of London Boys School.



Vine Street 'disease resistant' tree planting including species 1 and species 2.



Bevis Marks 'rain garden' a SUDs project planted in an engineered substrate.



Cheapside Sunken garden progress, due to be completed in May 2024.



Jubilee Gardens render, indicative visualisations of site, due to be completed Nov 2024.

All aspects of Phase 1 are due to be completed in 2024, this phase has been subject to delays, this is a result of multiple funding streams and stakeholders.

Phase two: Developed

Integration of resilience measures into existing schemes at an earlier stage of development.



Little Trinity Lane current (left) and render (right) indicative visualisations of site, subject to revisions.



Bank Junction 'rain gardens' completed Apr 2024, full greening due to be completed Sep 2024.



Barbican podium 'Micro-climate' monitoring undertaken by Atkins.

Phase 2 is progressing with all major project reaching Gateway 5. Alternative options are being reviewed for reallocation of funds from projects scoped out of phase 2.

Phase three: City Greening & Biodiversity

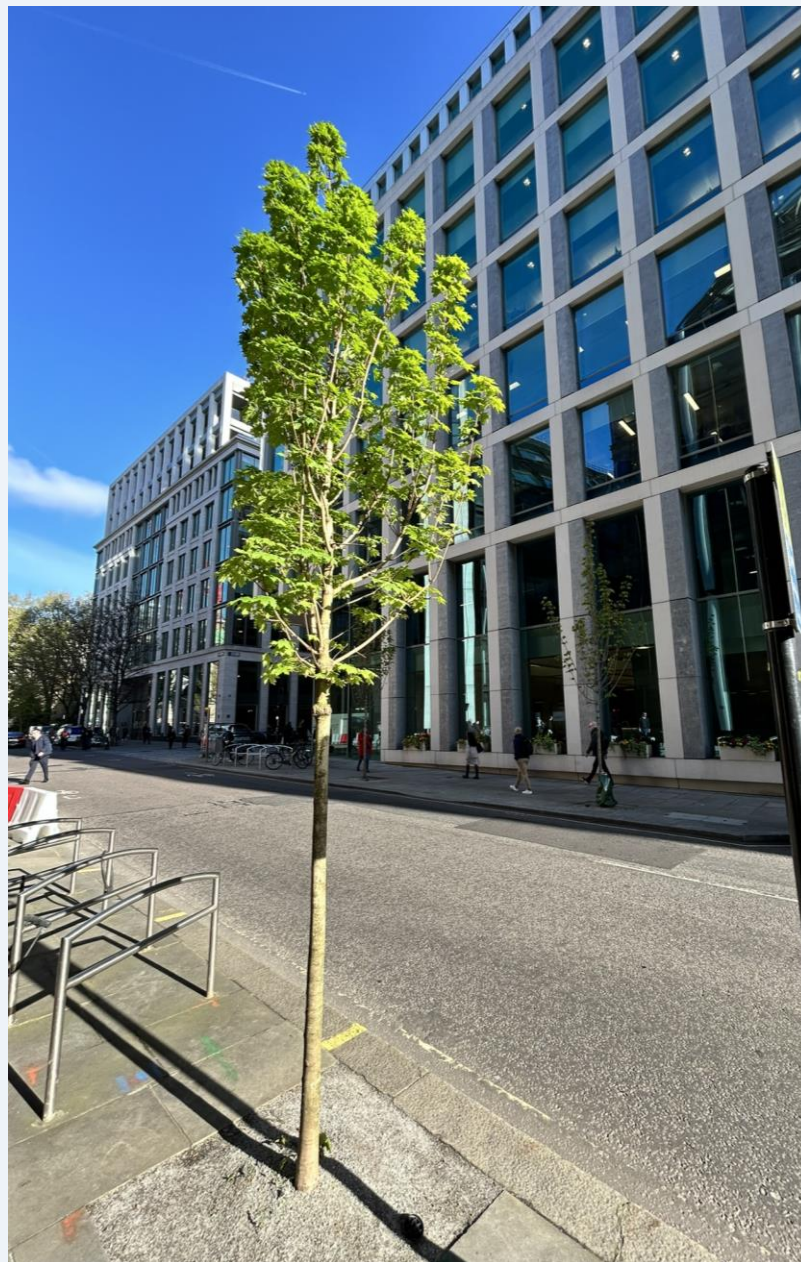
Sites identified where climate resilience measures would be most beneficial and to test strategic measures including creation of green corridors.



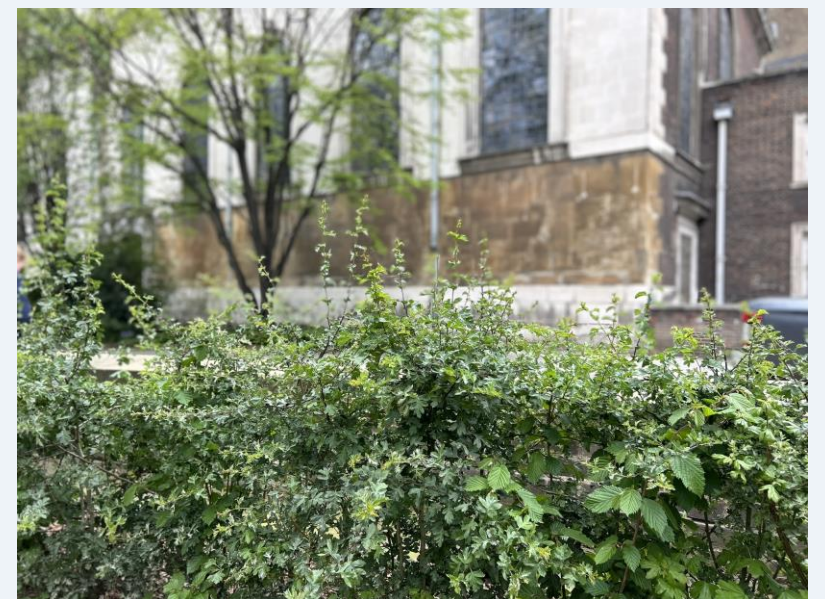
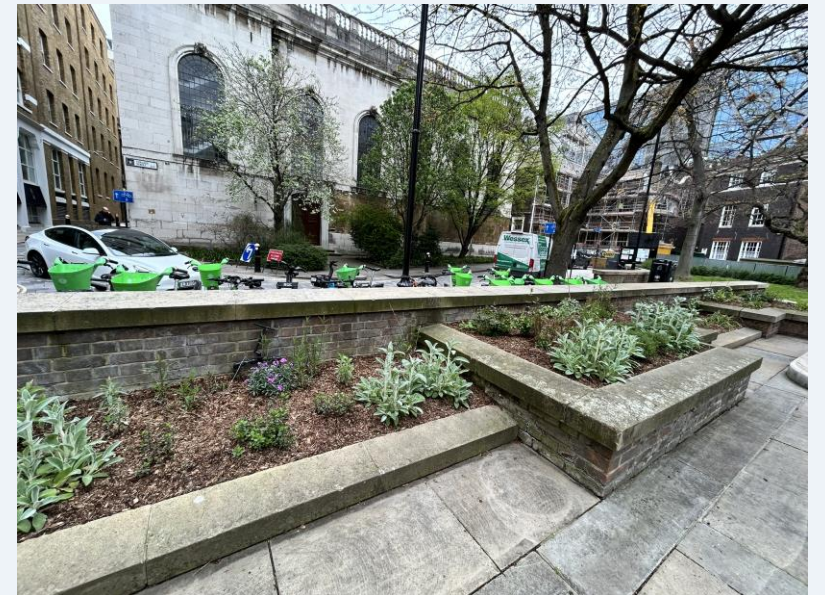
All Hallows by the wall sand beds completed in Spring 2023.



Replanting site St Mary Aldermanbury completed Oct 2023, aim to increase biodiversity.



Street tree planting across the City, a total of 43 were delivered in 23/24.



Whittington Garden completed Nov 2023, aim to increase plant diversity, supported by Rewild London fund

Phase 3 consists of three key elements, 're-landscaping', 're-planting' and tree planting. There are four major 're-landscaping' projects and 14 're-planting' sites.

Phase four: Sustainable Drainage

Sites identified for incorporation of sustainable drainage, to redirect rainwater from the catchment reducing and slowing the flow into the sewer system.



Bread street infiltration 'rain garden' along cycle route.



Ludgate Broadway infiltration 'rain garden' along highway.



Knight Rider Court infiltration 'rain garden' in re-allocated parking bay.

Phase 4 is progressing through the design phase and includes five sites. Detailed designs are to be supplied for Gateway 5 and construction packs, to be programmed in 2025.